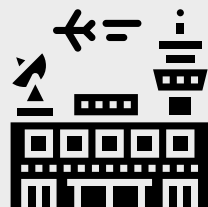




Local Government Areas

Liverpool
Fairfield
Cumberland
Canterbury-Bankstown



New Infrastructure Projects

Western Sydney International Aerotropolis
Airport Commercial Precinct
Airport Passenger Terminal Precinct
Airport Freight, Logistics and Commercial Precinct
Western Sydney International (Nancy-Bird Walton) Airport



Transport

Road, Railway, T-Way, Bus and Motor Vehicle



Population

441,095 (2016)

464,165 (2019)

Aboriginal and Torres Strait Islanders

3,012

Liverpool City

1,482

Fairfield City

181

Merrylands Central



201,869 Born Overseas

40.7% Liverpool City (83,238)

53.9% Fairfield City (107,068)

49.3% Merrylands Central, (11,563)



121,374

Young people

41,678 Primary School Students aged 5 to 11

35,708 High School Students aged 12 to 17

43,988 Tertiary Education / Young Workforce aged 18 to 24



60% Socio-Economic Disadvantage

42 out of 70 suburbs in Region E are socio-economically disadvantaged, have a SEIFA (Socio-economic Indexes for Areas) Score below 960



Employment & Labour Force

180,740 Total labour force (participation rate)

91.07% Total Employed (164,607)

8.93% Total Unemployed (16,133)



Employment Status

106,693 Full-time

52,935 Part-time

4,979 Other

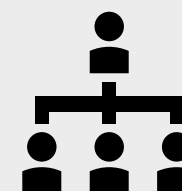


38,989

Registered Businesses

22,253 Non Employing Businesses

19 Industry Sectors



16,736

Employing Businesses

15,977 with 1-19 Employees

731 with 20-199 Employees

28 with 200+ Employees

Our impact in 2019

SWC works across 3 Education Sectors



42

High Schools



103

Primary Schools

8,796

Young people participated in at least one of SWC's initiatives



6,990

HSC VET Students successfully completing a one-week work placement



746

Host Employers trained & developed workplacement students



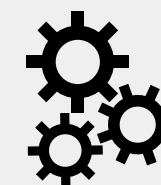
315

Students participated in the **Big Dreams, Bigger Futures** as part of the **Communities for Children** initiative



3,320

Students developed their employability skills, confidence & ambition through **Work Ready sessions, mock interviews & career skills workshops**



635

Students expanded their horizons and **made industry connections** during the **Future Links, Future Ready Tours**

Our impact from 2006-2019

67,000



Student Workplacements
(2006-2020)

15,800



Students participated in a **Mega or Mini Seek**
a **Skill Interactive Careers Expo**

8,420



Volunteers

2,160



Mini Career Pals letters written &
exchanged with adult volunteers to help
primary school students gain written
communication skills.

2,030



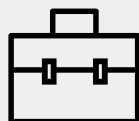
Work Ethic Awards & Gift cards
awarded to students at annual
presentation days

319



Industry visits & tours attended
by **10,275 students**

16, 300



Students attended **Work Ready &**
Employability Skills Workshops

815



Evidence Based Program sessions delivered
to students (to build resilience, improve
problem solving skills, make responsible
decisions & achieve goals)

6,200



Hours Volunteered by young
people through initiatives like
FUSION & Youth Advisory
Committees

2,142



Students, teachers & service providers participated in
the annual **Youth Mental Health Summit** (focused on
removing stigma & making positive connections with
service providers)

171



Partnerships created

3,175



Host Employers, Project **Partners**
& Stakeholders **engaged**

SWC has been an active member of the Workplace Learning Network (WLN) for the past 3 years. The WLN is an association comprised of 16 organisations with a business model that focuses on the youth of NSW.

In addition to being a service provider of the Structured Workplace Learning program, the network members have delivered a variety of workplace programs and services to schools, industry and communities in their regions for over 15 years.

The WLN provides opportunities for students to obtain the skills and workplace learning experiences they require to make sound personal, educational and vocational choices to ensure they have the best chance of thriving in the workplace in the future.

Currently the WLN works with 778 schools across NSW and over 20,000 employers, and provides work placements for over 60,000 students annually. Each region works relatively autonomously to deliver their own unique collection of work placement services.

WLN members are unencumbered by alliances to out of region influences ensuring the; management is local, the staff is local and the services are local.

WLN Engages with all Education Sectors



STATE wide Strength

LOCAL knowledge, impact, network and change

Across NSW, the WLN works with:

778
 HIGH SCHOOLS



16 REGIONS
 Including rural, regional and metropolitan

20,000+
 HOST EMPLOYERS
 PER YEAR



60,000+
 ANNUAL PLACEMENTS
 PER YEAR



3,000+
 NEW HOST EMPLOYER BUSINESSES
 RECRUITED PER YEAR



Apprenticeship & Traineeship Expo 2019

In partnership with Brett Carter Events, the 2019 expo was hosted for the second time in Liverpool at the Whitlam Leisure Centre and was attended by 2,000 students, parents, Careers Advisers and young job seekers. They had the opportunity to meet with potential employers, training providers and organisations that provide support services for young job seekers.

SWC was proud to be involved as a stall holder at

the Apprenticeship and Traineeship Expo and also to promote the event to our network of schools and employers. This Apprenticeship and Traineeship Expo compliments the Seek a Skill Interactive Careers Expo (formerly Try a Trade Expos) that SWC has hosted in partnership with local high schools and Local Councils (and was previously attended by up to 2,000 students from 20 high schools annually) over the past decade.



2019 National Youth Week Celebrations

The 2019 Bring It On! Festival, held during Youth Week in April, had more than 5,000 young people and their families from all around Sydney gather at the Fairfield Showground.

SWC again hosted an interactive careers and pathways stall along with a t-shirt design contest. The theme of the t-shirt design was "your future," which the young participants were eager to create and share. Paper t-shirts were given to design, then displayed throughout the day, with three

lucky winners winning gift vouchers for both best design and best effort.

The Youth Collective Impact Team interacted with families who had come for a family day out, as well as handing out resources on programs and important information for parents about engaging in their child's education and supporting their wellbeing. It was an ideal opportunity for SWC to speak with local students, residents and community workers about 'Our' community.



Work Ready & VET Expectations (Corptraining)

Recognising the importance of ensuring that students are supported to prepare for and understand the value of completing their workplacement in a professional manner, SWC has funded the services of a professional presenter from Corptraining to assist schools in delivering their Work Ready programs to our Vocational Education & Training (VET) students.

The information provides students with an overall awareness of workplace expectations, how to successfully meet them and ways to positively contribute. Close to 16,000 students have benefited from this initiative, which also includes workshops for students from Years 10 through to 12.

Topics covered include preparation for work

experience as well as finding part time work and transition into the workforce after completing their high school education.

A further 10,500 students have participated in Mock Interview Days hosted by SWC and Corptraining over the past decade.



InnoClub : Skills for Entrepreneurship

SWC has partnered with the InnoClub, (an initiative of Campsie RSL Group) where they will educate, incubate & accelerate start-ups on innovation for solving club business challenges and local community / social problems.

One of their goals is to work with local schools and young people to provide them with the key skills and mindset required to create and implement innovative solutions that can be scaled into social enterprises. SWC has been involved in a consultation process with the executive team to provide them with key insights into the best approach when working with our local community.